

SPICE  
UP

SOUR

COLOUR CARD VICTORIA MELANGÉ & MOULINÉ FW 24/25

Biella Yarn

BY SÜDWOLLE

## MELANGE AND MOLULINÉ

1M0779	page 2A	5M0394	page 5C	7M0912	page 3A
1M1819	page 2A	5M0491 ○	page 5C	7M1670	page 2C
2M0076 * ○	page 3A	5M0660 ○	page 6B	7M1671	page 2C
2M0321 ○ Δ	page 2B	5M0662 ○	page 6B	7M1672	page 2C
2M0354 ○	page 3B	5M0668 ○	page 6B	7M1673 ○	page 3B
2M0355 ○ Δ	page 3A	5M0906	page 6A	7M1770	page 2C
2M1653	page 3A	5M1654	page 5C	8M0003 * ○ Δ	page 3C
2M1693	page 3B	5M1655	page 6A	8M0004 * ○ Δ	page 4A
3M0987	page 2B	5M1656	page 6B	8M0005 * ○ Δ	page 4A
3M0991	page 2A	5M1777	page 5C	8M0069 * ○	page 3C
3M1664	page 2A	6M0034 ○	page 7B	8M0081 * ○ Δ	page 4A
3M1722	page 2A	6M0057 ○	page 7B	8M0122 * ○ Δ	page 4B
4M0033 ○	page 5A	6M0079 ○	page 7C	8M0205 * ○ Δ	page 4A
4M0663	page 4C	6M0730	page 7B	8M0482 ○	page 4A
4M0776	page 5B	6M0825	page 7C	8M0483 ○	page 3B
4M0778	page 5B	6M0829 ○	page 6C	8M0484 ○	page 4B
4M0820	page 5A	6M0910	page 7A	8M0493 ○	page 3C
4M0833 ○ Δ	page 5B	6M0968	page 5C	8M0500 ○	page 3C
4M0994 ○	page 5B	6M0979	page 7A	8M0692 ○	page 4B
4M1092 ○	page 4C	6M1679	page 7C	8M0894	page 4B
4M1657	page 4C	6M1680	page 7C	8M1697	page 4B
4M1660	page 4C	6M1685	page 7A	9M0070 ○	page 3C
4M1661	page 5A	6M1686	page 6C		
4M1662	page 5B	6M1687	page 7A		
4M1665	page 2B	6M1698	page 7C	ML0063	page 1B
4M1723	page 4C	6M1720	page 7A	ML0080	page 1A
4M1776	page 5A	6M1821	page 6C	ML0099	page 1A
4M1820	page 5A	6M1822	page 7B	ML0102	page 1A
5M0040 ○	page 6C	6M1823	page 7B	ML0103	page 1A
5M0080 * ○ Δ	page 6A	7M0045 ○	page 2B	ML0104	page 1B
5M0196 ○	page 6C	7M0078 ○	page 3A	ML0105	page 1B
5M0324 ○	page 6A	7M0088 ○	page 2C	ML0113	page 1B
5M0340 ○	page 6B	7M0898	page 3B	ML0144	page 1B
5M0393	page 6A	7M0900 ○	page 2B	ML0147	page 1A

Stock service ex Asia:

for all melange colours in qualities:

Victoria Nm 2/30, Nm 2/48

100% Merino Wool Extrafine, 19.5 μ, anti-shrinkage

Δ Leonora Nm 2/30, Nm 2/48

100% Merino Wool Extrafine, 19.5 μ, TOTAL EASY CARE

Stock service ex Europe:

for all melange colours in quality

Victoria Nm 2/30, 100% Merino Wool Extrafine, 19.5 μ, anti-shrinkage

\* for quality Adelaide Nm 2/28 100% Merino Wool Fine, 21.5 μ, anti-shrinkage

○ for quality Victoria Nm 2/48 100% Merino Wool Extrafine, 19.5 μ, anti-shrinkage

This colour card has been produced on basis of Victoria Nm 2/30.

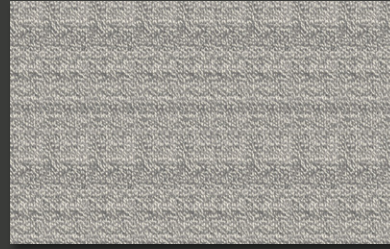
Reproduction of the colour shades may vary for other qualities.

A



ML0099

B



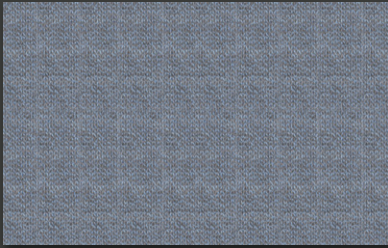
ML0063



ML0080



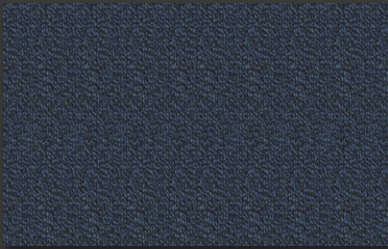
ML0144



ML0102



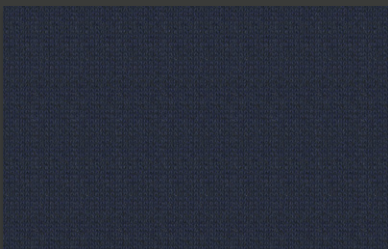
ML0104



ML0147



ML0105

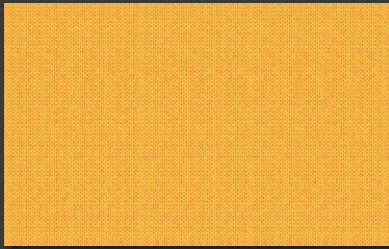


ML0103



ML0113

A



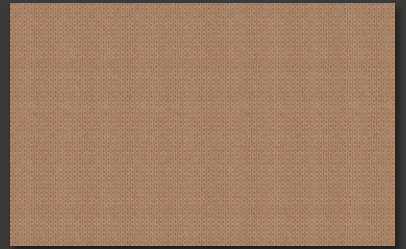
1M1819

B



2M0321 ○ △

C



7M1672



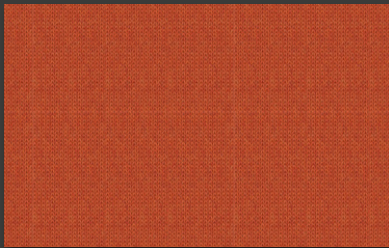
1M0779



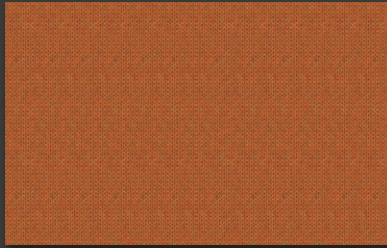
7M0900 ○



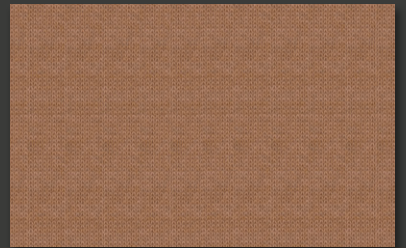
7M1671



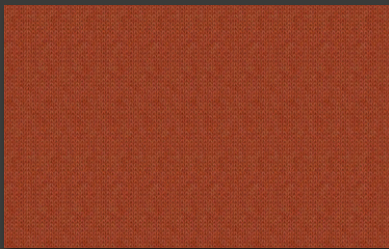
3M1722



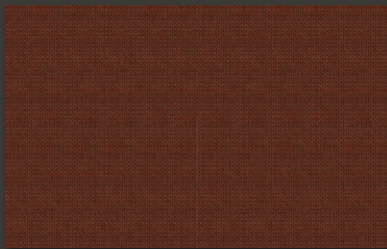
3M0987



7M1770



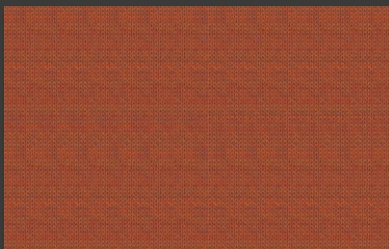
3M1664



4M1665



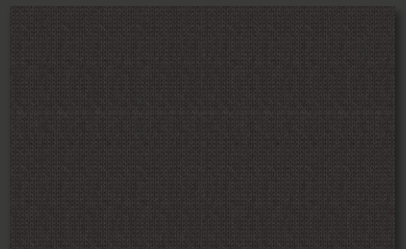
7M1670



3M0991

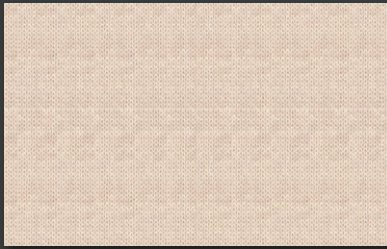


7M0045 ○



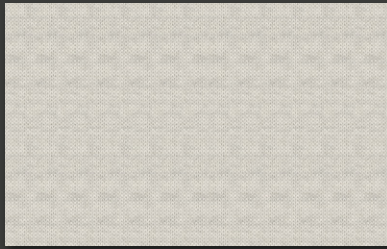
7M0088 ○

A



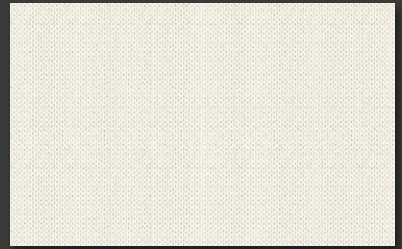
2M1653

B



8M0483 ○

C



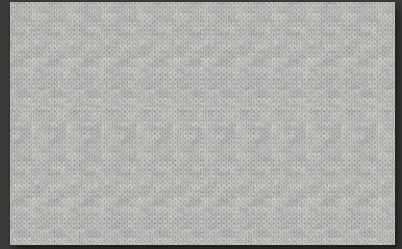
8M0493 ○



2M0076 ✕ ○



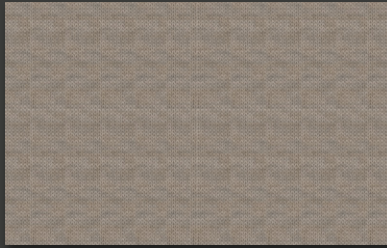
2M0354 ○



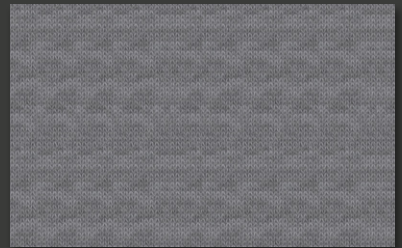
8M0500 ○



2M0355 ○ Δ



2M1693



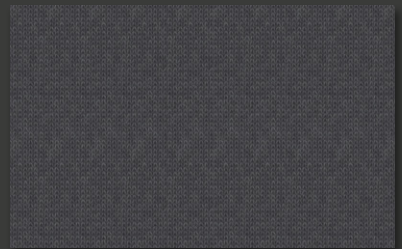
8M0003 ✕ ○ Δ



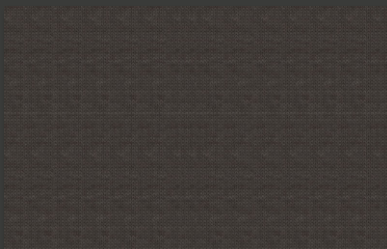
7M0078 ○



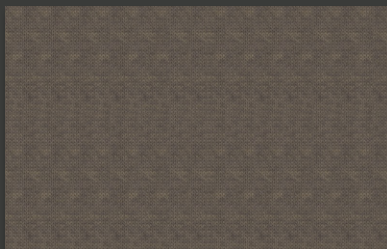
7M1673 ○



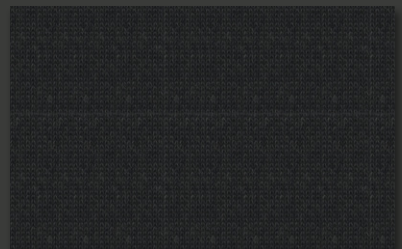
8M0069 ✕ ○



7M0912

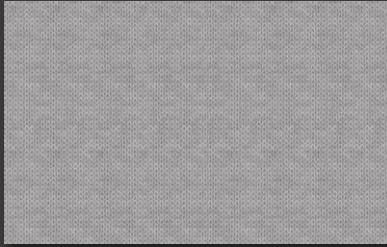


7M0898



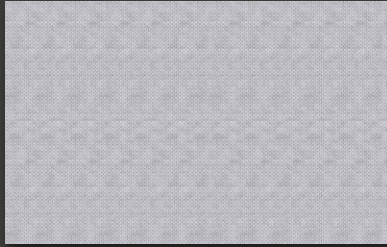
9M0070 ○

A



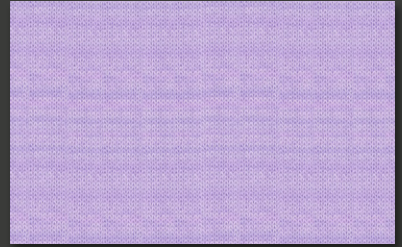
8M0482 ○

B



8M0692 ○

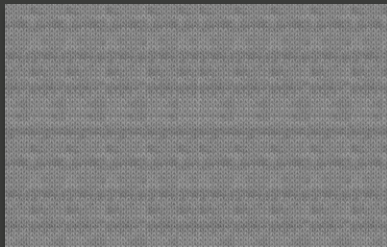
C



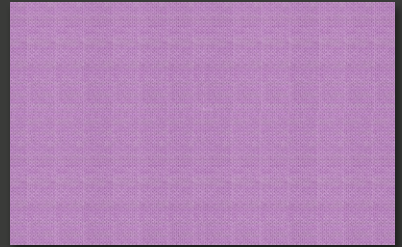
4M1723



8M0081 \* ○ △



8M0894



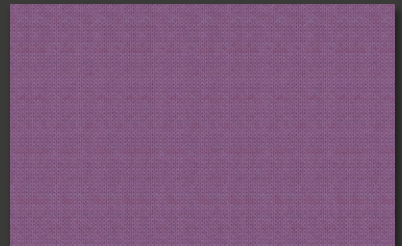
4M0663



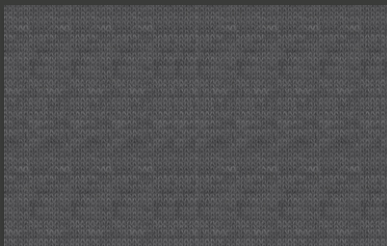
8M0205 \* ○ △



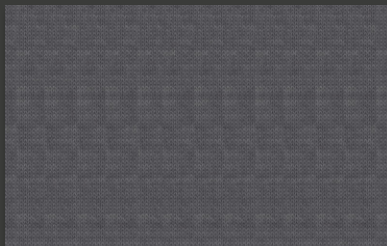
8M0484 ○



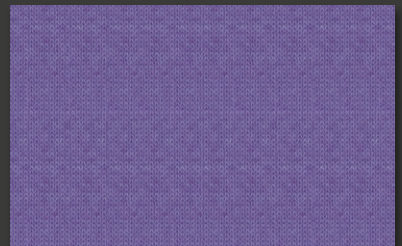
4M1660



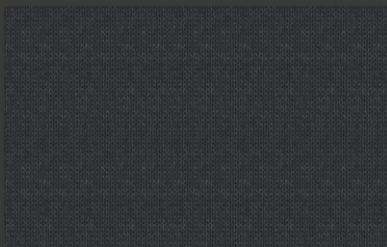
8M0004 \* ○ △



8M1697



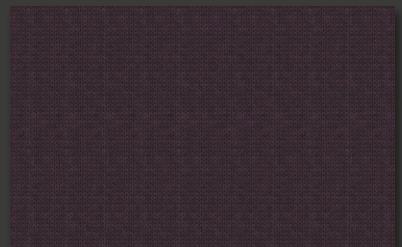
4M1657



8M0005 \* ○ △

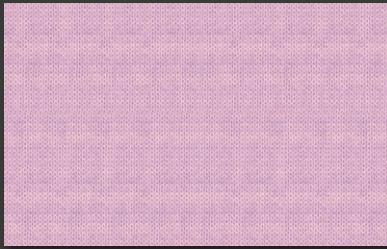


8M0122 \* ○ △



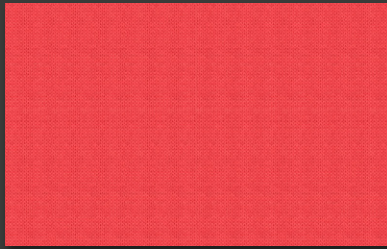
4M1092 ○

A



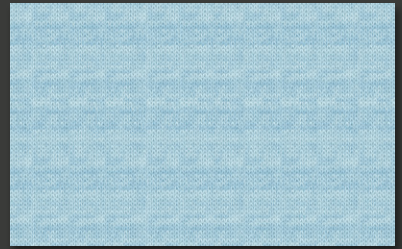
4M1776

B

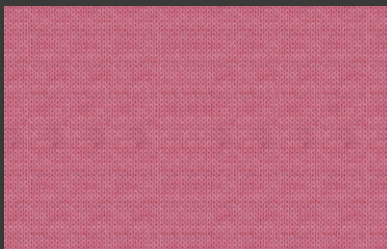


4M0776

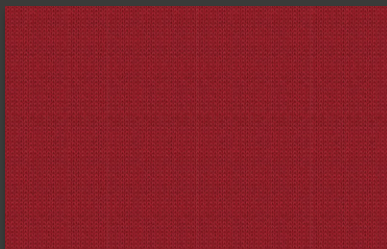
C



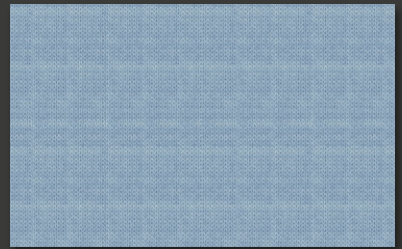
6M0968



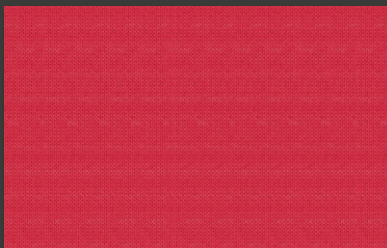
4M0820



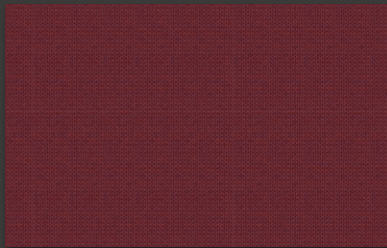
4M0994 ○



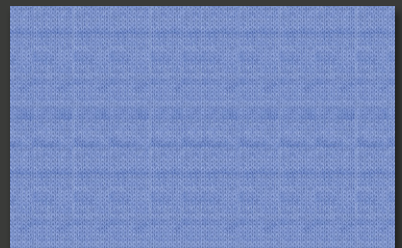
5M1654



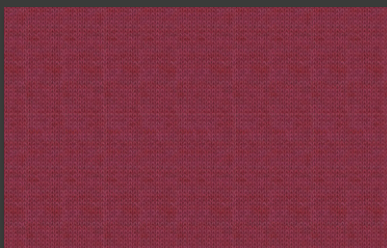
4M1820



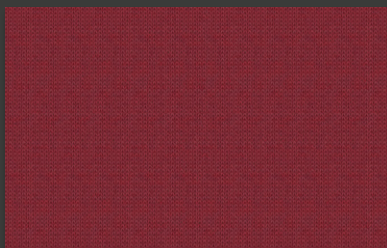
4M1662



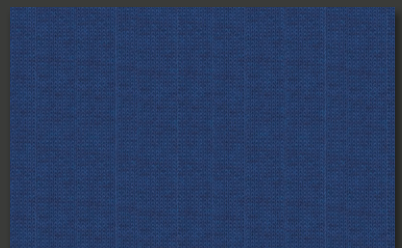
5M1777



4M1661



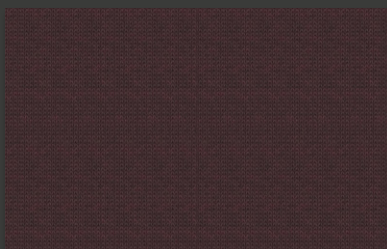
4M0778



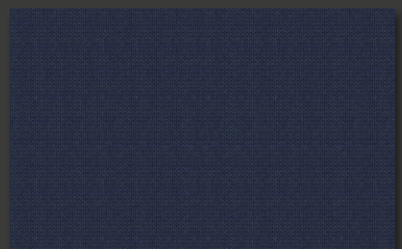
5M0394



4M0033 ○



4M0833 ○ △



5M0491 ○

A



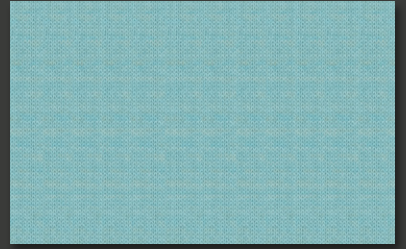
5M1655

B

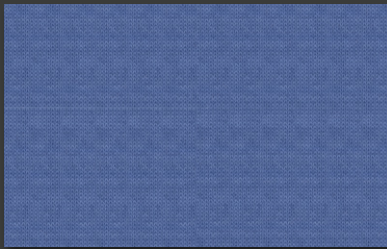


5M0340 ○

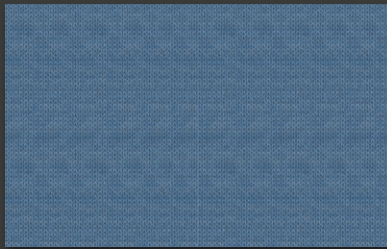
C



6M1821



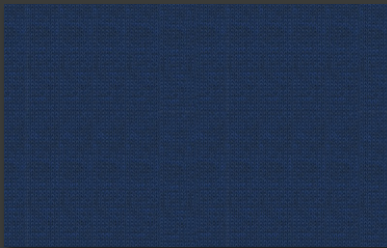
5M0324 ○



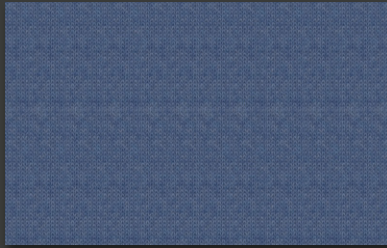
5M1656



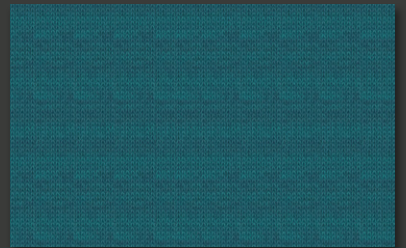
6M1686



5M0393



5M0660 ○



5M0196 ○



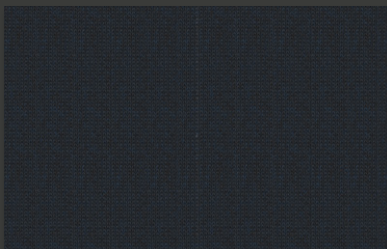
5M0906



5M0662 ○



5M0040 ○



5M0080 \* ○ Δ



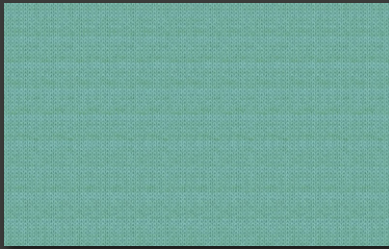
5M0668 ○



6M0829 ○

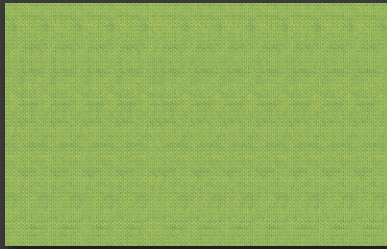


A



6M0910

B



6M1823

C



6M1679



6M1687



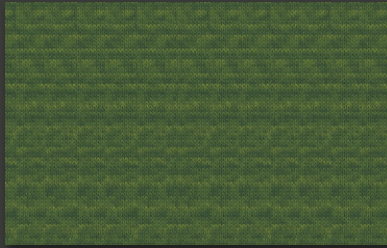
6M1822



6M1698



6M1720



6M0730



6M1680



6M1685



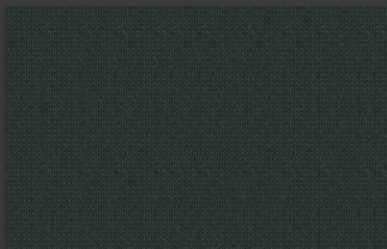
6M0057 ○



6M0825



6M0979



6M0034 ○



6M0079 ○

südwollgroup

yarns@suedwollegroup.de



Click to explore our  
other collections!  
Visit our Library

